

A breakthrough in suspended
flooring construction.

FA T FA T

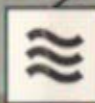
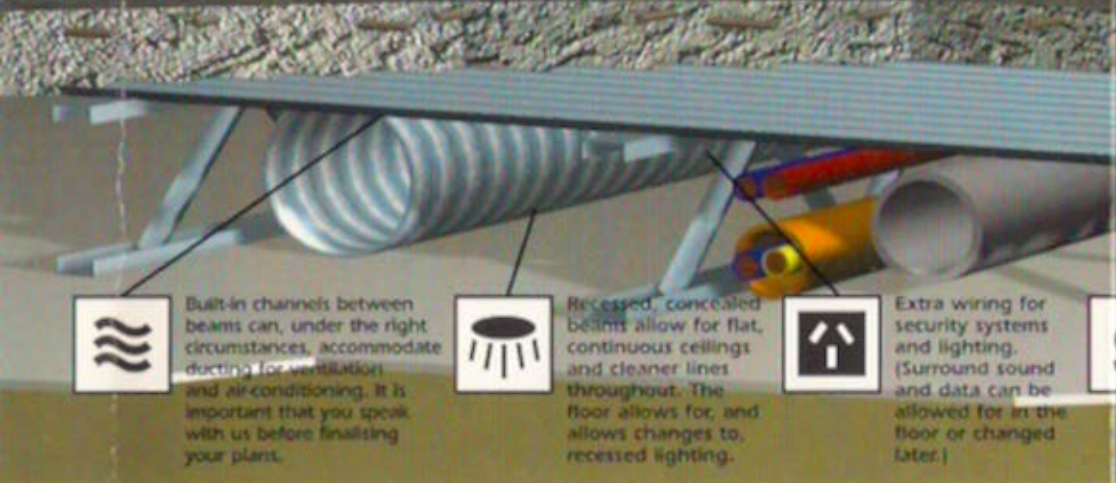


FLOORTECH

FLOORING SYSTEMS

www.floortech.net.au

More choice. More flexibility.



Built-in channels between beams can, under the right circumstances, accommodate ducting for ventilation and air-conditioning. It is important that you speak with us before finalising your plans.



Recessed, concealed beams allow for flat, continuous ceilings and cleaner lines throughout. The floor allows for, and allows changes to, recessed lighting.



Extra wiring for security systems and lighting. (Surround sound and data can be allowed for in the floor or changed later.)

Introducing a revolutionary suspended concrete flooring system.

Floortech is an engineered system that is a remarkable break from the conventional suspended concrete floor, and one that offers many more design features and benefits. FloorTech flooring systems is an innovative and superior alternative to conventional concrete slabs.



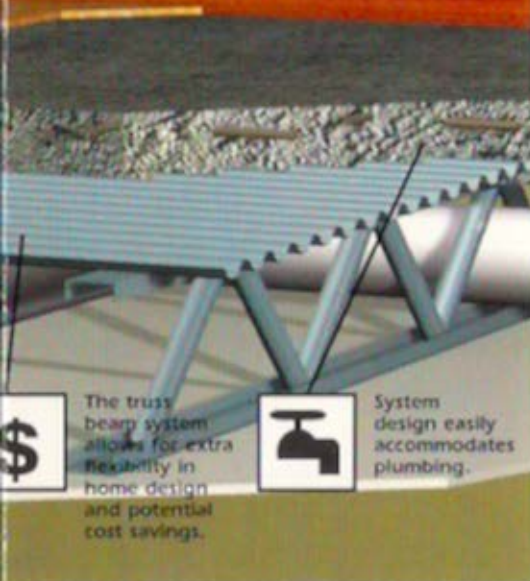
Provides the same strength as conventional concrete.

Its unique design eliminates the need for obtrusive concrete support beams on wide ceiling spans. The truss beam and built-in channels are ideal as ducting for ventilation, or to conceal wiring and piping.

Just look at some of the benefits this unique system offers you:

- Reduced construction time (you save on rent and move in sooner).
- Eliminates all dropped ceilings used downstairs to conceal pipes. Ceilings are flat and no concrete beams!
- Floortech provides a 'full service'. This means Floortech supply and co-ordinate the installation of all formwork, reinforcement, labour and concrete, including stairs and balconies.
- Because of the design the floor is easily accessible to accommodate wiring, plumbing,

Flexibility. Better Service.



The truss bearing system allows for extra flexibility in home design and potential cost savings.



System design easily accommodates plumbing.



A full service is offered, including stairs and balconies.



Plumbing and ducting are easily hidden inside the ceiling line.

lighting and, under some circumstances, air-conditioning - which is virtually impossible with conventional slab construction. Future changes to wiring and lighting are possible, unlike other systems.

- Greater freedom of design as placement of wet areas is no longer restricted.
- Accommodates complex designs in stairwells and voids without the added costs and delays. A better finish is achievable. Each slab is fully engineered.
- Provides the same strength as conventional concrete.



Eliminates the need for obtrusive concrete support beams on wide ceiling spans.



FLOORTECH

FLOORING SYSTEMS

4/63 Walters Drive, Osborne Park WA 6017

PO Box 115 Mt Hawthorn WA 6915

Office: **(08) 6461 5660** Fax: **(08) 6461 5670**

info@floortech.net.au www.floortech.net.au